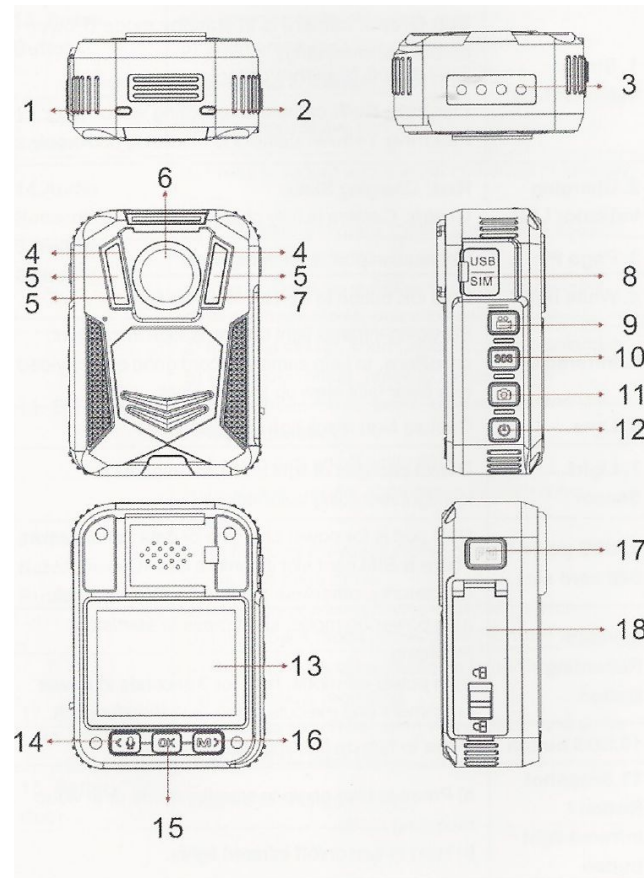


RoadScan Canada
PBC10
User Instruction Manual



CAMERA LAYOUT

1. Manual IR key
 - a. short Press: Night Vision
 - b. Manual long Press: White Light
2. Power: hold for 3 seconds to turn on/off or 'back' button
3. Mode Indication LED
 - a. Green=power on
 - b. Red=video on
 - c. Yellow=statement or audio only on
4. Charging mode indicator = blue
5. Charging base port
6. White LED
7. IR night vision LED
8. Laser Pointer
9. Lens
10. Light sensor (detects changes in light and auto turn on IR for low light recording)
11. USB port
12. LCD screen
13. One key 'play button' and 'scroll up browser key'
14. OK button (similar to 'enter')
 - a. short press=ok
 - b. long press=laser pointer
15. Menu access and 'scroll down browser key'
16. Highlight file key
17. Audio key (tape recorder)
18. Photo key / SOS button
19. Video key
 - a. long press on = camera starts recording immediately without needing to use the power key
 - b. long press off = turning the camera off during video mode without the need to use the power key
 - c. short press key = once the camera is powered on or in standby mode, this will start the recording



Power

Power On – Hold the power button on the top right for 3 seconds – a chime and a WELCOME screen will temporarily be displayed. The view of the camera lens will be displayed on the main LCD screen and LED at top of camera will be solid green.

Power Off – hold the power button for 3 seconds – A GOODBYE screen will temporarily be displayed and then camera will **shut down**. LED light will turn off (unless camera is plugged in).

Power On with Video Record – When the camera is **powered off**, hold the video record button for 3 seconds and the camera will **power on** and begin **recording** and a voice of ‘**recording start**’ will be heard. To turn the camera off, use the power button.

Power On with Audio Record – When the camera is **powered off** hold the audio button for 3 seconds and the camera will **power on** with 3 vibrations or buzzes and begin recording audio. To turn the camera off, use the power button.

Video

To start a recording – while the camera is on and not recording, press the video record button on the right side of the camera (from the screen). The device will vibrate, and a voice will sound indicating that the recording has started. The white video camera symbol at the top left corner of the screen will turn red and flash. The LED light will be flashing red.

To stop a recording – while the camera is recording press the video record button and the camera will vibrate and stop recording.

To highlight a recording – while the camera is recording, press the highlight button (Star button¹⁶) on the right side of the camera to highlight the recording segment. The highlighted segment will end when the video segment ends (see Split Time in menu options) These video recordings cannot be overwritten.

A gold star symbol will appear to the left of the battery life symbol on the top right corner of the screen while the recording is being highlighted to indicate the highlighted video.

Videos are in .MP4 format.



Photographs

Press the photo button to take a photograph. Photographs can be taken during video record mode. Photographs are in .JPEG format.

Statements & Audio Button

Record a statement – When the device is **not recording** – press the audio button to record a statement. The LED will be flashing yellow. To stop an audio recording, simply press the audio button again.

Highlight an audio recording – while the camera is recording a statement press the highlight button (Star button 16) to highlight the audio file to be able to access the file faster and more easily once the audio has been downloaded onto a computer.

Statements are in .WAV format.

Backing out of Screens

Use the power button on the right side of the camera to back out of subscreens.

Setting the Password

The password can be changed In the menu option. *PLEASE ENSURE YOU REMEMBER YOUR NEW PASSWORD AS IT CANNOT BE RETRIEVED WITHOUT SENDING IT BACK TO THE MANUFACTURER.* The new password will be required to view playback or via the computer.

Note: the owner will be responsible for any charges incurred for the camera to be returned to the manufacturer to be fixed.



Playback

The playback screen can be viewed by pressing the **OK** button (located under the LCD view screen) when the camera is in standby mode and on the main display screen. The user will be prompted to enter a password. The default password is '0' – 6 times, by pressing the **OK** button 6 times. Use the **Browse-up** and **Browse-down** buttons to scroll through other password entry options and press the **OK** button to select password entries.

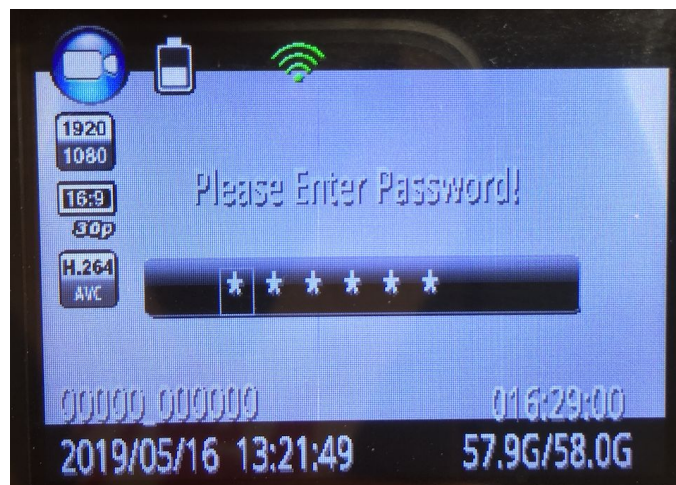
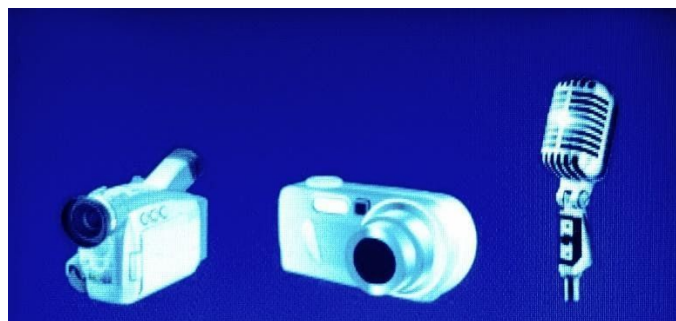


Figure 1

If a mistake is made when entering a password, **hold the Browse-up** button to move back one entry and **hold the Browse-down** button to move forward one entry.

After the correct password has been entered, use the **Browse-up** button to tab left and **Browse-down** button to tab right over either video, camera, or audio file tabs and press the **OK** on the selected file tab to view the files.





Playback

After selecting the form of data wished to be viewed, tab over to the file wished to be viewed and press the **OK** button to select that file. Pressing the **OK** button on a video or audio file **will automatically start playing the file**. – Use the **OK** button to pause and play the file.

Use the **Browse-down** button to **fast forward** and use the **Browse-up** button to **rewind** videos. Fast forward and rewind options can be sped up by tapping the **browse buttons** more than once. Video mode has **X2, X4, X8, X16, X32, X64** and **X128 speed (both forward and reverse)**.



Figure 3

One Key Playback

When the camera is in standby mode (not recording), on the main LCD view screen press the **“one key playback button”** otherwise known as the **“Browse-up button”** to open the most recently recorded media file. The user will then be prompted to enter a password prior to viewing files. (See playback for password entry instructions).

Menu Access

To access the menu, press the **Menu** button or **letter M**, while on the main LCD view screen while the camera is in standby mode, the user will be prompted to enter a password (see Playback for password entry instructions).

After the correct password has been entered, the settings menu will be displayed.

The **settings menu** allows the user to change functions on the camera to meet the user's preferences. Camera and audio recordings cannot be used in menu mode.



Menu Access

Use the **Browse-down** button to scroll down and **Browse-up** button to scroll up through the menu items and **OK** button to select a menu item and enter its sub menu. Finally, in the sub menus, use the **Browse-up** button to scroll left, the **Browse-down** button to scroll right, and the **OK** button to select option.

Press the **Power** button to back out of sub menus without making changes to the settings.

Note: While in the settings menu or sub menus, pressing the photo, video record, or audio record button, will return you to the main LCD view screen.

Menu Options

*Look at top right of menu and the number out of 30 indicates which menu option you are on.

- 1/30: **Set camera video resolution.** Options are 2304x1296 30P, 1920x1080p 30p, 1440x1080p 30P, 1280x720 60P, 1280x720 30P, 848x480 60P, 848x480 30P, and 720x480 30P.
- 2/30: **Set the file size:** This means setting the size of the photo or video. Options are 5M, 8M, 10M, 12M, 16M, 20M, 21M, 23M, 25M, 28M, 30M, and 32M
- 3/30: **Burst on/off** (Burst on allows to snap multiple photos at once upon pressing the photo button). Options are 2, 3, 5, 10, 15, and 20 photos.
- 1. 4/30: **Wifi** - on/off
- 2. 5/30: **Self Timer** allows for a timed delay before a photo is taken. Options are 5 and 10 seconds.
- 3. 6/30: **Quality** - Normal, Fine, Super Fine
- 4. 7/30: **Pre-record** - on/off - records 10 seconds prior to hitting video button
- 5. 8/30: **Post-record** - on/off - continues recording 10 seconds after video turned off
- 6. 9/30: **CarDV Mode** - on/off - there is no need to change this, leave off
- 7. 10/30: **Loop Record** - on/off - highly recommended to leave off or video might be overwritten thus losing the video
- 8. 11/30: **Split Time** - Automatically splits video recordings into segments of set times to more easily manage recordings. **Each segment will be a separate media file.** Options are off and 3, 5, 10, 15, 30, and 45 minutes.
- 9. 12/30: **Slide Show** - When viewing a photo file in Playback mode in photo files tab, photos will automatically be scrolled through.
- 10. 13/30: **Infrared** - Manual or Automatic: While under dark circumstances, infrared LED will help record clear image or video in HD.
 - **Auto:** In low light situations (3 Lux), 4 IR LED will be turned on automatically, camera switches to infrared filter lens, video image turns black and white. When brightness increases again, the IR LED turns off, and image becomes colorful again.
 - **Manual:** When night vision is needed, Press the Flashlight/Infrared button to switch to infrared mode, 4 IR LED will be turned on, video image will turn black and white. When night vision is no longer needed press the IR button to switch out of night vision.
- 11. 14/30: **Record Warning** - the voice/vibrating that advises the user that video recording has been activated. Options are On/Off.
- 12. 15/30: **GPS** - Having GPS on allows to connect to GPS satellite as to view location of where videos recordings from camera were taken on a computer. Options are On and Off.
- 13. 16/30: **TimeZone** - This setting allows to change the time zone the camera is set for. Default is set for GMT (Greenwich Mean Time).ie; PST is -7
- 14. 17/30: **Language** - Allows user to switch the language of the device.

15. 18/30: **Screen Save** - Allows user to set the amount of time before the device's screen saver is on. Options are off, 30 second and, 1, 3, and 5 minutes.
- 19/30: **LCD Brightness** - Allows user to change the brightness of the device's screen. Options are low, medium and high.
 - 20/30: **Auto power off** - Turning this function on will cause the device to turn off after the selected time when in standby mode. Options are 30 seconds, 1, 3, and 5 minutes.
 - 21/30: **LED Light** - If on LED light will change colors depending on what the camera is doing (for example: recording). If off no LED indicators will show.
 - 22/30: **Key tone** - When this is on user will here a key tone when pushing buttons on the device. Options are on and off.
 - 23/30: **Volume** - Altering this affects the device's sound levels including key tone and video/audio playback files.
 - 24/30: **Coding Format** - H.264
 - 25/30: **Date-time stamp** - Change the date and time of the device.
 - 26/30: **ID Setting** - Allows to designate the camera to a specific person by entering a unique user ID.
 - 27/30: **Password** - Having this setting on will cause the password requirement before entering menu and playback screens. Options are on/off
 - 28/30: **Change Password** - Allows the user to change password. User must enter old password and then the new password followed by confirmation of new password using the Scroll and OK buttons. *Note: remember your new password as it is non-recoverable and will be required to be sent back to manufacturer for resetting. This is a protection measure against unauthorized viewing of your data should the camera be lost.
 - 29/30: **Default Setting** - Allows the user to reset the device to the default settings.
 - 30/30: **H22_20190302_v1.76** - version of the device.



Special Features

Infrared: Press the **InfraRed (IR)** button to manually turn on the **IR**. If the camera is set to 'automatic IR' then there is no need to turn the **IR** on manually (when IR is on, two red lights will appear on the front of the camera)

Flashlight (White LED): Hold the **IR** button for 2 seconds for the flashlight to turn on / hold again for 2 seconds to turn off the flashlight.

Laser pointer: Hold the **OK** button for 2 seconds to activate the **red auxiliary light** located on the front of the camera (**red laser**) – hold it again for 2 seconds to turn it off.

White Beacon: Hold the **photo** button for 2 seconds to turn on the flashing white beacon. Hold again for 2 seconds to turn it off.

Charging

There are several ways to charge the camera which results in the blue light being illuminated. If the blue light does not illuminate then the USB may not be seated properly. **DO NOT FORCE INTO THE BASE**. The camera may be on and in use or the camera may not be seated properly in the charging base. Make sure to correctly place the camera into the charging base - the front of the camera should be facing away from the USB port on the charging base. If the blue light is not on, the camera is not charging. It takes approximately 4-6 hours for the camera to fully charge.

NOTE: If the camera is on while charging and becomes unplugged from the power source (via the docking station or USB port) the camera will power off.

Ways to charge

1. Use the outlet adaptor, USB cable and charging base to plug into an outlet
2. Use the outlet adaptor and USB cable only to plug into an outlet

3. Plug the USB cable directly into the computer
4. Use the charging base with the 12 volt adaptor while in the vehicle

IMPORTANT: if the camera is not used and charged on a consistent basis, the camera's battery will lose the ability to hold a charge. Batteries are not replaceable and not covered under warranty. Please ensure to use and charge your camera often.

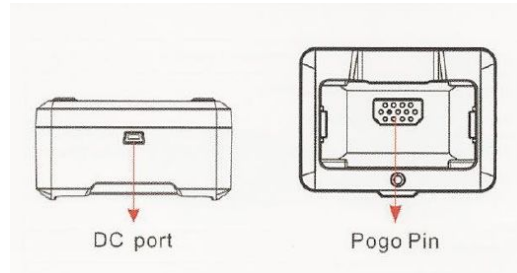


Figure 4



Opening Files On the Computer

1. Plug the camera into the computer via the USB cable. DO NOT FORCE THE USB INTO THE CAMERA - IT SHOULD FIT EASILY. Forcing the USB into the camera may cause damage to the port. Damage caused in this manner will not be covered under warranty.
2. Once connected to the computer, the user will be prompted to enter their password (see Playback for instructions for password entry).



Figure 5

3. After the password has been successfully entered, the camera screen will display a **usb connecting** message

4. The computer should then recognize the camera as a 'D', 'E', 'F', or 'G' drive.

IMPORTANT: depending on your company's firewall system, the camera may not be allowed access to your system thus preventing the viewing of data. Please contact your IT personnel to assist with this measure.

5. Once located (see figure 7), open the corresponding Drive. If the computer does not recognize the camera - unplug the USB cable and plug back in.



Opening Files On the Computer

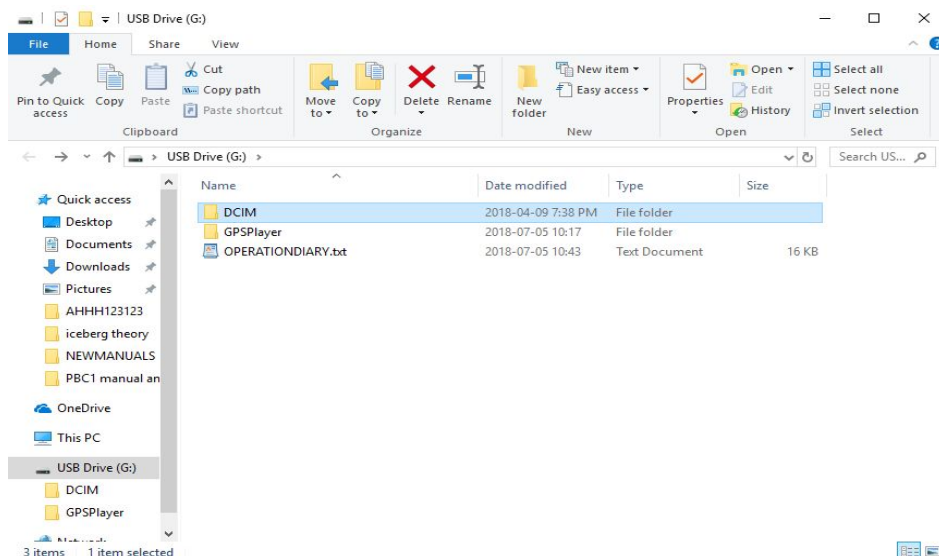


Figure 7

6. DCIM and GPSPlayer folders will be shown and one file, OPERATIONDIARY.txt. Once the .txt file is opened (not compatible with MAC), there will be a log accounting for the use and operation of the camera via time & date and the nature of use of the camera

(ie; video recording, photo capture, and power on/off). This is important as it will demonstrate when the camera has been in operation. If data is missing this file can be checked to ensure that the data files match the time and operation of use.

7. Open DCIM, then open 100MEDIA

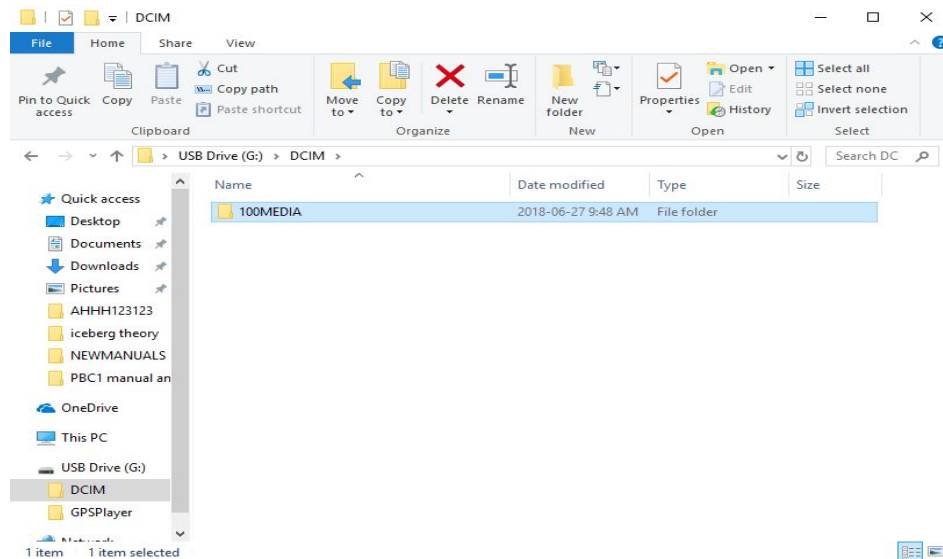
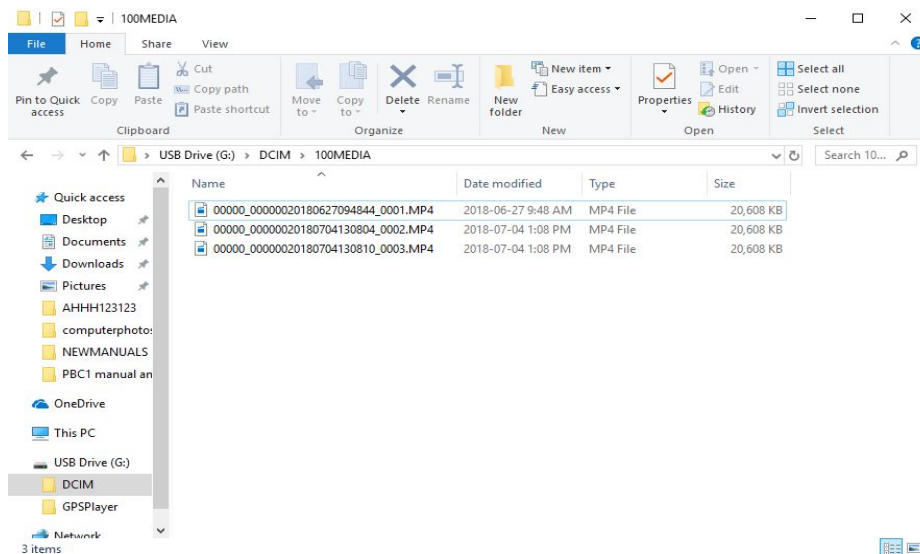


Figure 8



Opening Files On the Computer

8. Choose the file to view (MP4, JPEG, WAV)



Deleting Files

Ensure that all files are saved prior to deletion of files.

Once deleted the files cannot be retrieved.

When the user is sure of files to be deleted, select the file or files and press delete key, multiple files can be deleted at the same time.

Files are required to be deleted in order to clear up space on the camera prior to its next use. Failure to do so will result in no data being recorded.

A **card full** message will appear and an alarm will sound if there is no storage available on the camera to record. This means that data needs to be deleted.

The amount of storage remaining is displayed in the bottom right corner of the rear display screen showing 58.0G/58.0G. This shows how much storage is left compared to how much storage available.

Failure to delete files will result in the camera unable to record and important data may be missed.

Failure to delete files which results in missed data being recorded will not be constituted as a warranty issue or a failure of the product nor will RoadScan Canada Inc be held liable for any data failed to be captured.



GPS Files

16. Back out of the 100MEDIA file and open the second folder GPS Player.
17. Player.exe should be in this folder.
18. Choose player.exe (the .exe file may prompt a download of a file, speak with your IT personnel regarding this capability). Alternatively, the GPS player (Datakam) link can be found on RoadScan Canada's website.
19. The GPS component will open and files should systematically show up with satellite images beside each file. Files show up on the bottom right of the screen. If there is no satellite image on the file it means that no GPS was captured.

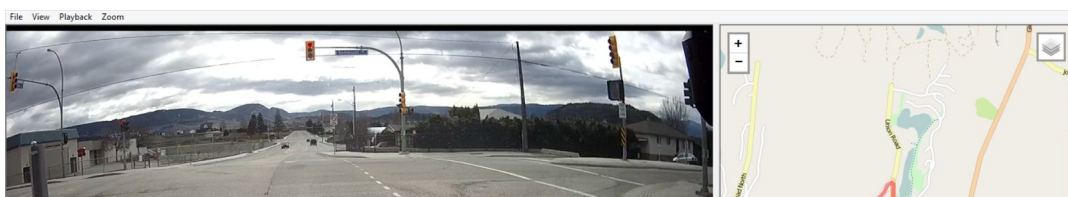


Figure 10

20. To view a file, highlight the file and hit the play button. Depending on the size of file will determine the length of time taken to download the GPS data.
21. To delete these files, go back to the folder of 'D', 'E', 'F' or 'G', highlight and delete selected files
22. To save files, highlight, copy/paste and store in a new folder

REMEMBER TO 'EJECT' THE BODY CAMERA PROPERLY FROM YOUR COMPUTER, FAILURE TO DO SO COULD POTENTIALLY CORRUPT YOUR CAMERA AND OR COMPUTER. THIS FAILURE WILL NOT CONSTITUTE A WARRANTY ISSUE.



Camera Ports

The PBC10 only features USB port on the right side of the camera. Use this port to access data on to the computer. There is no port for the addition of a mini camera at this time.



Figure 11

Reset

Should the unit freeze up (typically by pushing too many buttons at the same time - similar to the 'wheel of death' on a computer), located in the HDMI port is a small reset button. Use an

object (a paper clip or similar) to push this button. The camera will then be reset. No files are lost as files can only be deleted off a computer.

DASH CAM

The PBC10 can be used as a dash cam in your vehicle making it the most versatile camera in the industry .

To attach the PBC10 docking station to your vehicle, locate the best suitable spot on the dashboard to allow for best viewing position, clean the area of the dashboard to ensure proper adhesion. For best adhesion, utilize 3M Dual Lock as it will provide the proper securement required to ensure that your video is stabilized (velcro will not work).

Suggested: place both pieces of Dual Lock on the bottom of the charging base, then place the charging base onto the dashboard. This will ensure that both pieces of Dual Lock are aligned properly. Ensure that the PBC10 is aligned properly prior to pressing the Dual Lock onto the dashboard firmly (with the USB port facing rearward).



Figure 12



DASH CAM

Use the 12 volt adaptor (supplied), plug the USB into the USB port (DO NOT FORCE INTO PLACE). Run the 12 volt adaptor cord to the 12 volt port in the vehicle. 12 volt ports are located in different locations in vehicles and location should be referred to in the owner's manual for each vehicle. The 12 volt adaptor does have a 10 foot cord to allow the cord to be run or hidden to the vehicle's respective port. Please check with your vehicles manual for reference to this option. RoadScan Canada Inc accepts no liability for any damage caused to vehicles during this process of 'running' or hiding the 12 volt adaptor cord.

DO NOT CUT THE 12 VOLT ADAPTOR OFF AND RUN POWER DIRECTLY TO YOUR VEHICLE, THIS WILL DESTROY THE CAMERA. RoadScan Canada Inc will not assume any liability whatsoever for this if damage is done to your vehicle. Warranty is void in this circumstance.

OPERATION OF DASH CAM

The PBC10 may be in the record mode prior to placing the camera into the dock or alternatively, the record button may be pushed once the camera is in the docking station. The video button is a little harder to reach in this situation. To stop recording, hit the video button a second time.

AT NO TIME SHOULD YOU OPERATE THE PBC10 WHILE YOUR VEHICLE IS IN MOTION. ANY DAMAGE CAUSED DURING THIS OPERATION WILL NOT BE ASSUMED BY RoadScan Canada Inc. Please refer to your Provincial or State laws.

When in video mode, the PBC10 will capture video, speed and GPS location with the use of Google Maps¹.



Figure 13

Note: the camera is being charged while in the docking station.

Page 13

Accessing Wifi



Download 'LinkinEyes' A12 Lite from App store (currently unavailable on Android phones).



¹ Map Data ©Google 2019

Figure 14

Wifi App Settings

1. Ensure to turn **'Wifi on'** in the settings menu.
2. A green Wifi indicator will be visible on the top of the rear screen.

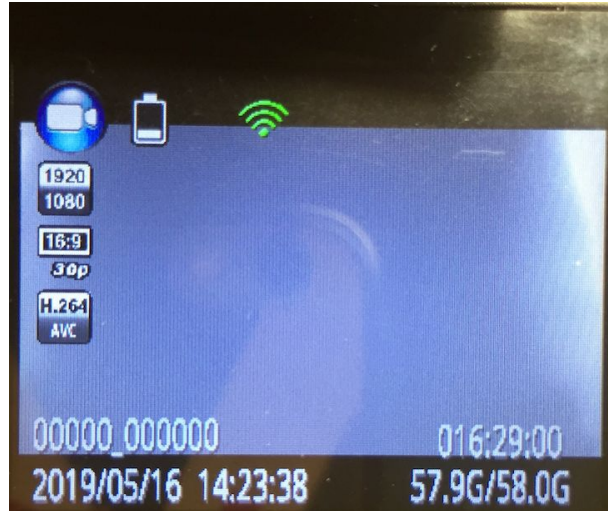


Figure 15

3. Go to the Wifi Settings on the phone and locate MyDVR-XXXXXX.

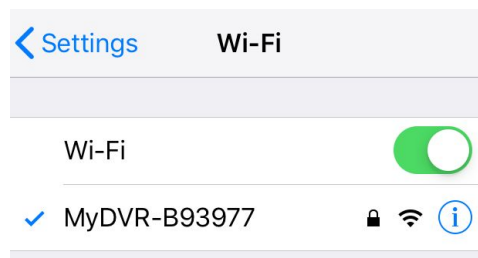


Figure 16

Wifi App Settings

4. Enter the initial password - 1234567890
5. After Wifi gets connected successfully, open the LinkinEyes App.

6. Live streaming (on the phone only, not remotely at a desk), control of recording and photographs will be functional.

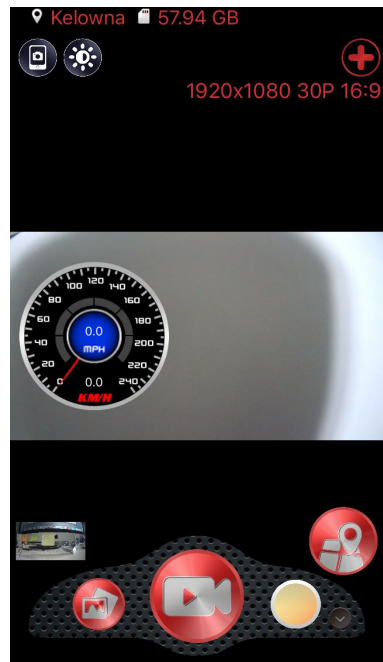


Figure 17

- a. Video



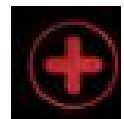
- b. Take a photo - upper left corner



- c. Adjust brightness - upper left corner



- d. Camera list (if multiple cameras have been used by your phone) - upper right corner



- e. File list

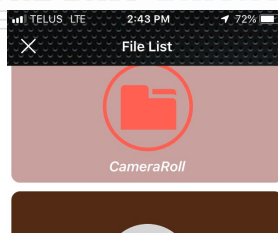


Figure 18

- f. Speedometer (for dash camera functionality)



- g. Switch to hybrid GPS mode



- i. Hybrid GPS view provides a video view, date, time, and google maps location

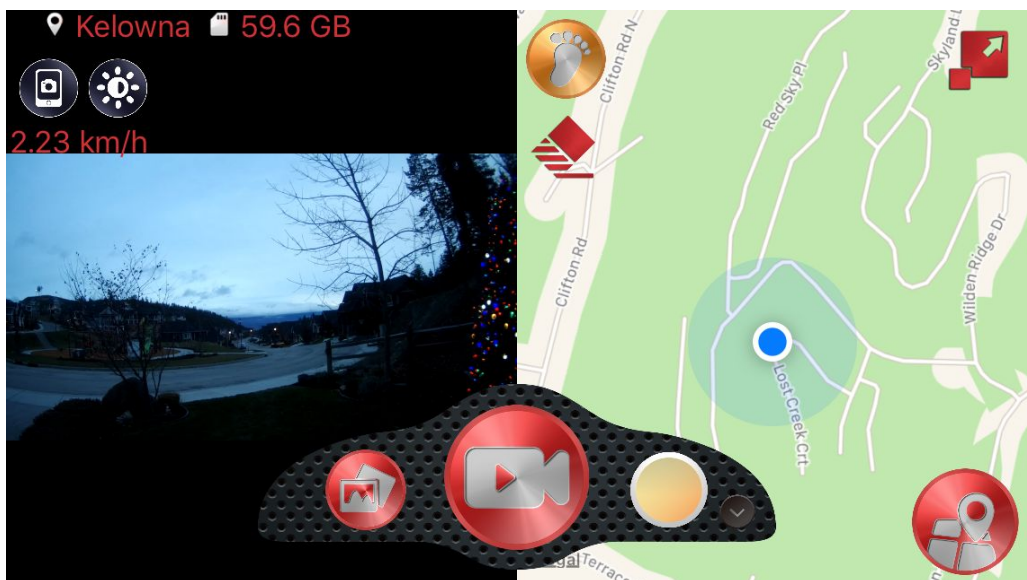


Figure 19

Wifi App Settings

8. Orientates Northern direction



9. Mode (video or photo) and Quick Settings (resolution and other settings)



10. Quick settings provides the ability to adjust resolution, sync your device, format storage, reset camera settings and more.

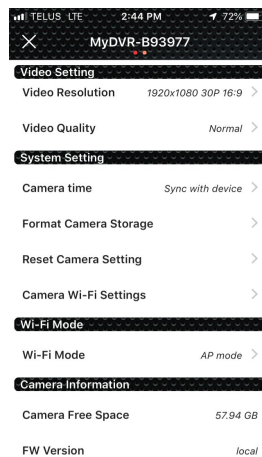


Figure 20

11. Images and videos can be edited with annotations, change font colour, add images and drawing capabilities, reducing video timethis allows the user to highlight files instantly.



Figure 21

Wifi App Settings

12. Files can be located in the file list for video and photos.

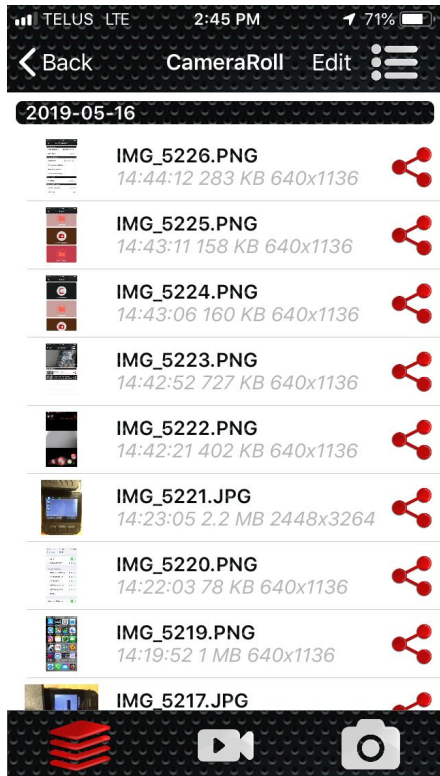


Figure 22

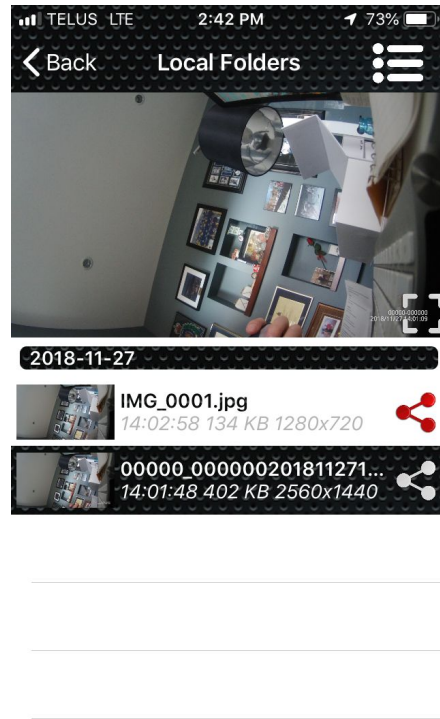


Figure 23

Troubleshooting

- If you get the password incorrect while attempting to connect, either unplug and plug the camera back into the computer or turn the camera power off and on again so as to have the ability to re-enter the password.
- If the **photo button** or **power button** are pushed while the password screen is displayed the camera will switchover to the main LCD viewing screen and enabling the use of all the camera's functions.
- If the camera is **recording** (either audio or video) while plugged into a computer, this means that the camera is not charging or unable to view any data on the camera. In this case, unplug the camera, and turn the camera off. However, the camera is unplugged while in recording mode (either audio or video) the camera will **not turn off**.
- If the camera freezes, hit the reset button (covered in Reset the Camera). This will occur when too many buttons are pushed simultaneously.
- Reasons for the camera to stop functioning are: low battery, card full, multi buttons pushed simultaneously, incorrectly plugged into charging base or computer.
- PBC10 not charging: check the USB and port to make sure there is a proper connection.



NOTICE

This manual is furnished under license and may be used or copied only in accordance with the terms of such license. Except as permitted by such license, no part of this publication may be reproduced, stored in a retrieval system, or transmitted, in any form or any means, electronic, mechanical, recording, or otherwise, including translation to another language or format, without the prior written permission of RoadScan Canada Inc. The content of this manual is furnished for informational use only, is subject to change without notice. RoadScan Canada Inc assumes no responsibility or liability for any errors or inaccuracies that may appear in this book.

DISCLAIMER

Please make sure that all regulations and laws are followed as set by your Provinces or States DMV (Department of Motor Vehicles) prior to mounting your camera for vehicular use. This manual is not designed to provide any specific legal advice.

- Please check the RSC PBC10's features periodically to ensure that it is operating as required.
- Please use the RSC PBC10 responsibly while operating a vehicle.
- Please do not operate the functions of RSC PBC10 while operating a vehicle.
- RoadScan Canada Inc shall not be held responsible for any traffic violations related to the positioning or improper use of the PBC10.
- Avoid mounting the camera outside of or near an airbag deployment zone (please consult your owners manual for this description).
- Knowing most vehicles run off 12VDC power supply from the battery, please double check the cigarette power adaptors output rating before attempting to run power directly from the 12 volt port.

NOTE: Please check your Provincial Motor Vehicle Act and Regulations pertaining to the use of this camera while operating your vehicle. It is illegal in most areas to operate a camera while driving.

IMPORTANT

This guide provides important information on the use and operation of your RSC PBC10 and the images/features shown throughout the manual are subject to change without notice due to system and firmware upgrades. Please read all the information carefully prior to using the product for the best performance and to prevent any damage/ injuries or misuse of the device(s). Customers are encouraged to have read through this complete user's manual before using the RSC PBC10. Any unapproved changes or modifications will void your warranty. Please ensure to have a complete understanding of the following conditions and restrictions.



CONDITIONS

Please read the following messages to make sure your working environment is suitable if the camera is intended for use in the vehicle.

- If your vehicle does not cut off power to your cigarette lighter port, then you may have to manually turn off or unplug the charger to prevent it from overheating.
- The temperature should be kept between -10°C and 50°C (14°F to 122°F).
- Avoid putting the product in places where temperature or humidity may change rapidly.
- Keep it dry, dustless and avoid lens exposure in direct sunlight.
- Keep product away from heat sources such as electric heaters.
- Do not use the camera near harmful chemicals.
- Do not place product near any strong magnetic objects
- It might influence the normal operation of the product if used at the fringe range of normal temperature. Please turn off the power when not in use.
- Do not disassemble the product.
- Do not shake or strike the product.
- Please obey the local government's environment protection policy.¹

RESTRICTIONS:

When using this product, the safety precautions below must be taken to avoid possible legal liabilities and damages. Retain and follow all product safety and operating instructions. Observe all warnings in the product operating instructions. To reduce the risk of bodily injury, electric shock, fire and damage to the equipment, observe the following precautions.

PLEASE NOTE that under certain circumstances, audio/video recording may be **PROHIBITED** by law. This device should be used only in compliance with all applicable Federal, Provincial and local statutes.

- DO NOT disassemble this product. Opening or removing covers may expose you to dangerous voltages or other risks. Incorrect reassembly can cause electric shock during subsequent use.
- DO NOT use this product unless knowledge of the law, Federal, Provincial and local governments pertaining to use of the product is fully understood. To infringe on one's privacy, spying intercepting and related activities are illegal and punishable by law. Monitoring one's private activities without consent is illegal and this product is not designed or manufactured for these purposes.
- DO NOT use this product to carry out any illegal activities such as sneak preview, etc. RoadScan Canada Inc shall not be responsible for any consequences of illegal conducts made by users.
- DO NOT put the plastic packaging bags in reach of children or babies. Plastic bags can create a suffocation hazard when placed over the nose and mouth.

- DO NOT plug the AC adapter into the outlet in improper situations.
- Plugging in an AC adapter with wet hands might cause electric shock.
- Plugging in the AC adapter unsteadily might cause fire or electric shock.
- DO NOT cover the AC adapter when it is connected to an outlet, place the adapter near heaters, or put it on the floor which is equipped with a heater. The above mentioned operation might cause fire or incidents.



WARRANTY

RoadScan Canada Inc warrants that this product will be free from defects in title, materials and manufacturing workmanship for one year or otherwise specified on the product packaging. This limited warranty shall commence from the date of purchase. RoadScan Canada Inc products warranty is not transferable and is limited to the original purchaser. If the product is found to be defective then, as your sole remedy and as the manufacturer's only obligation, RoadScan Canada Inc will repair or replace the product.

This warranty shall not apply to products that have been subjected to abuse, misuse, abnormal electrical or environmental conditions, normal wear and tear, improper installation, failure to ensure proper usage by employees, unplugging of the unit resulting in loss of data, or any condition other than what can be considered normal use. Warranty Disclaimer RoadScan Canada Inc makes no other warranties, express, implied or otherwise, regarding this product, and specifically disclaims any warranty for merchantability or fitness for a particular purpose.

All products leaving RoadScan Canada's facility have been tested and deemed working accordingly and in good condition. Any mishandling of the product(s) purchased does not provide immediate warranty relief.

It is the owners responsibility to read this manual and warranty coverage prior to making a warranty claim.

RoadScan Canada is the sole determiner if warranty is to be covered.

Photographs and or video will be requested to determine if an item is covered under their respective warranty.

LIMITATION OF LIABILITY

The liability of RoadScan Canada Inc, arising from this warranty and sale shall be limited to a refund of the purchase price. In no event shall RoadScan Canada Inc be liable for costs of procurement of substitute products or services, or for any lost profits, or for any consequential, incidental, direct or indirect damages, however caused and on any theory of liability, arising from this warranty and sale. These limitations shall apply notwithstanding any failure of essential purpose of any limited remedy.

